

---

# User Manual

---



**Apple User / Android User**  
**iDMSS Lite / gDMSS Lite**  
**iDMSS Plus / gDMSS Plus**

is a multi-platform mobile app allowing live view and playback of CCTV footage from a mobile device.

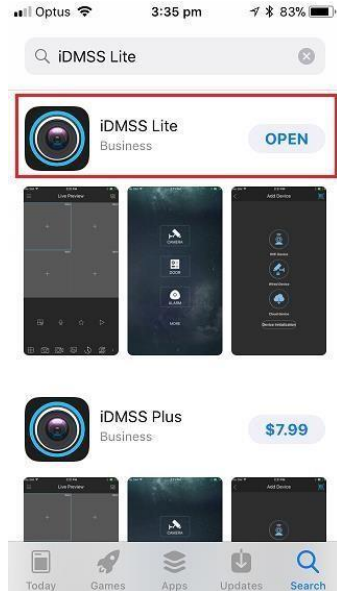
## **Manual includes**

Downloading the App  
Mobile Configuration  
Starting Live View  
Playback Footage

## iDMSS Lite / gDMSS Lite

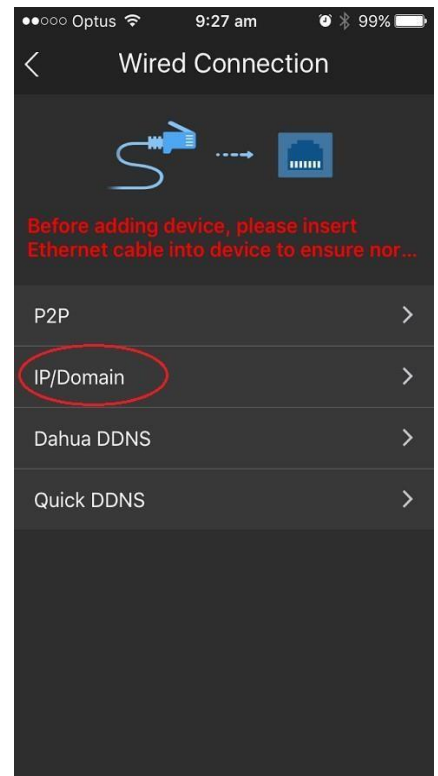
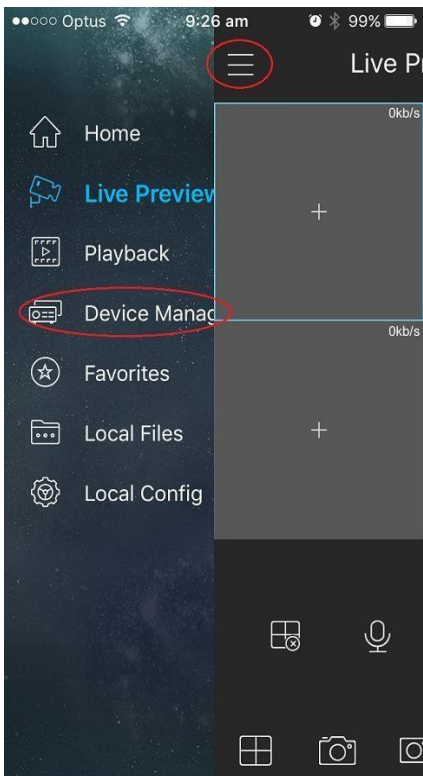
### Downloading the App

1) Download the remote viewing app from the App Store. Simply search 'iDMSS Lite' for Apple and 'gDMSS Lite' for Android.



### Mobile Configuration

1) Open the app and navigate to the Device Manager by selecting the menu item in the top left of screen. From the Device Manager select add a device in the top right of screen. Select Wired Device and then select IP/Domain or P2P.



2) Enter the details, valid username and password and select Start Live Preview.

Name: Create a profile Name (e.g. Home CCTV)

Address: type the IP address or the Domain Name

Port: 37777 is the default

Username: Type the Username set in the CCTV recorder.

Password: Type the Password set in the CCTV recorder.

Live Preview: Select Main if you want a higher resolution images but consumes more data.

Playback: Select Extra if you want to view a standard quality but less data it will consume.

Then Press **START LIVE PREVIEW.**

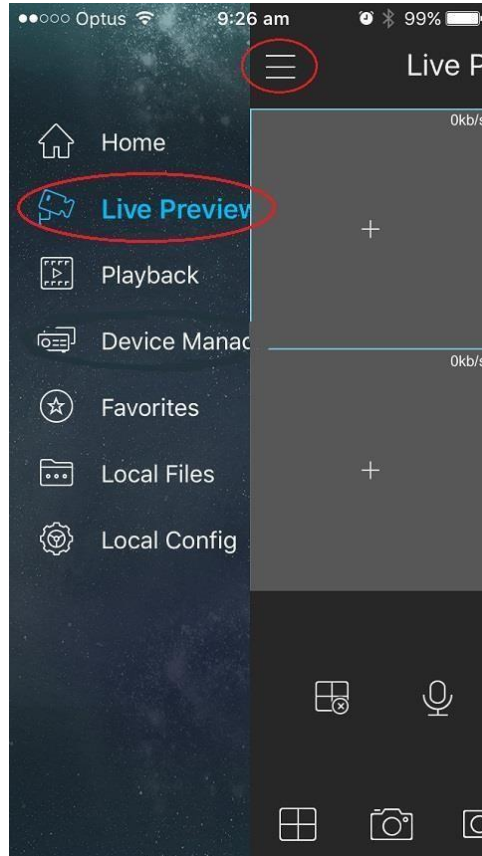
The screenshot shows a mobile application interface with a dark background. At the top, there is a back arrow and the title 'IP/Domain'. Below the title, there are several rows of input fields and dropdown menus:

- Register Mo... (partially visible)
- IP/Domain (partially visible)
- Name:
- Address:
- Port: 37777
- Username:
- Password:
- Live Preview: Extra >
- Playback: Extra >

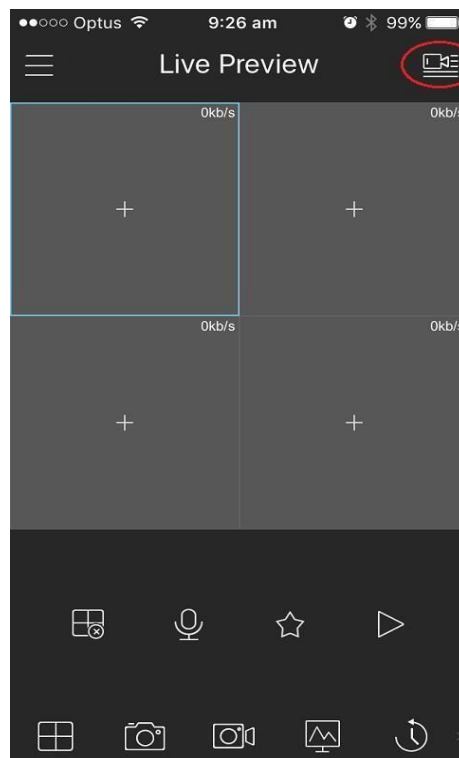
At the bottom of the screen, there is a blue button with the text 'Start Live Preview' circled in red.

## Starting Live View

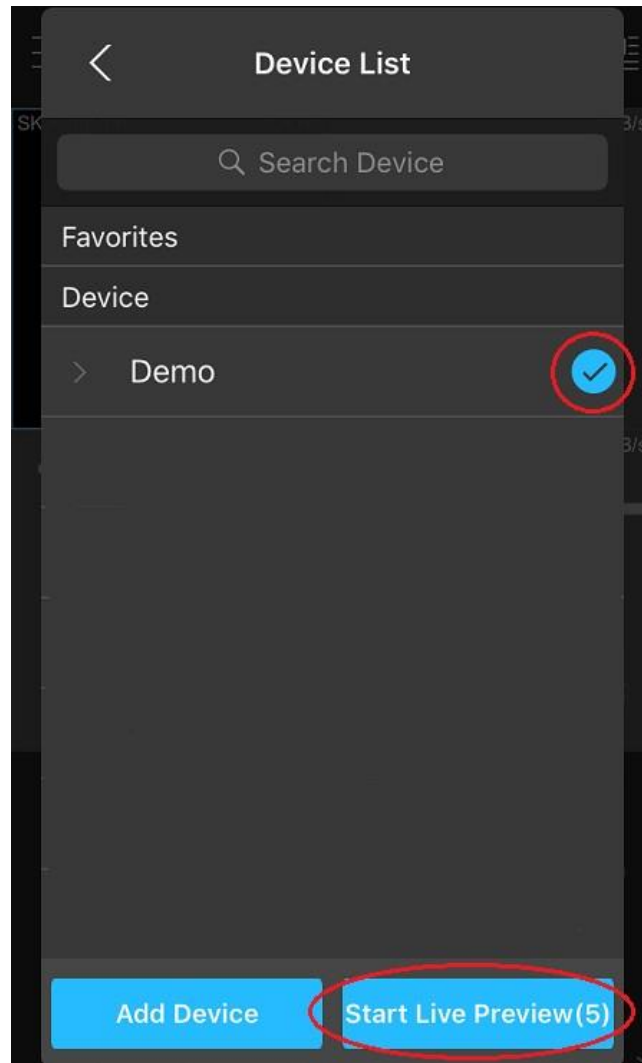
- 1) When launching the application select 'Live Preview' from the menu icon in the top left of screen.



- 2) Select the device menu in the top right of screen.

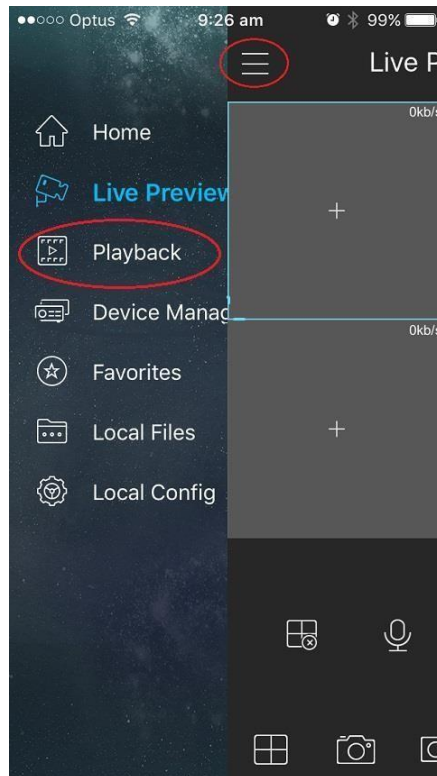


- 3) Select the profile you want to view by selecting the tick box on the right-hand side of the device. Once it is selected press "Start Live View" at the bottom and you will be taken to the live camera footage for the selected device.

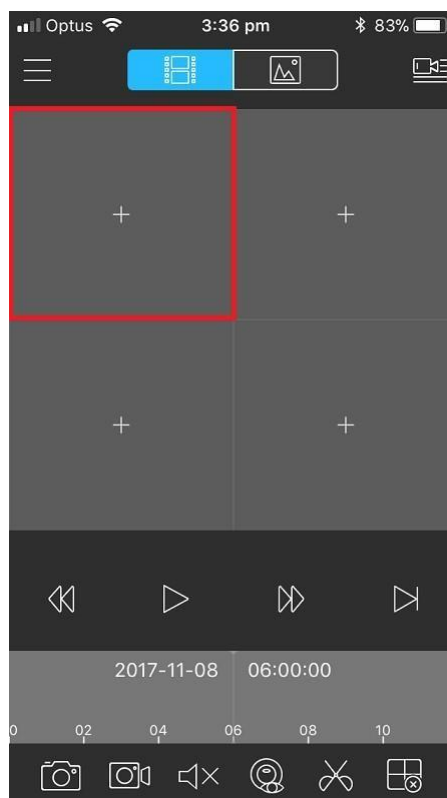


## Starting Playback

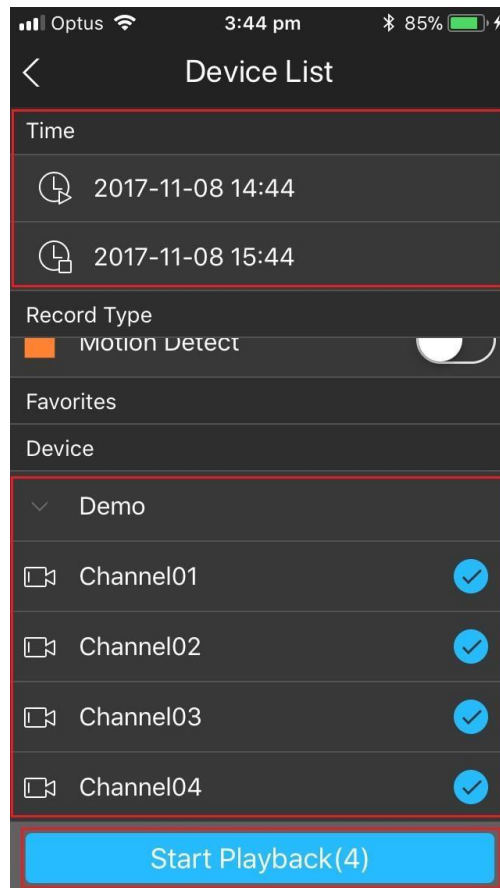
- 1) When launching the application select 'Playback' from the menu icon in the top left of screen.



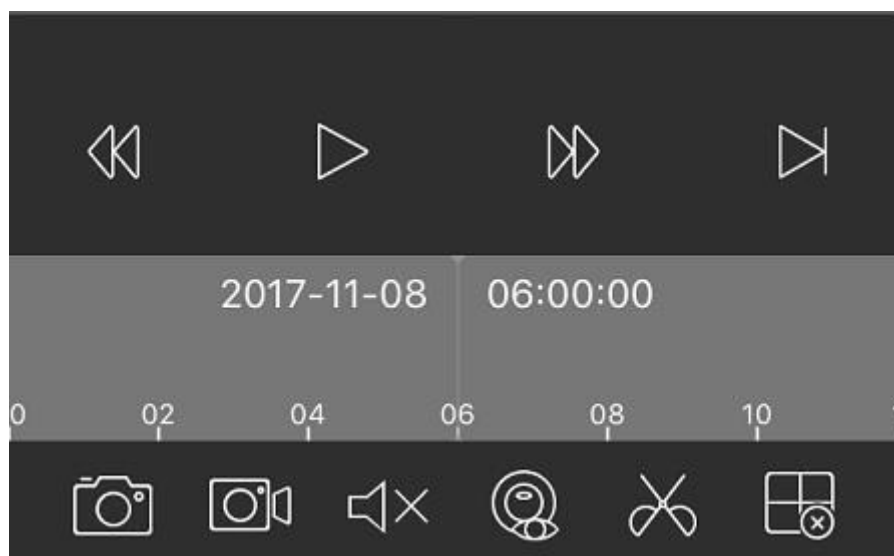
- 2) Select the add icon to import up to four cameras or you can select the camera icon in top right of the screen for multiple cameras to view



- 3) Select the appropriate date and time you wish to search and the camera you wish to add. Maximum of 4 cameras only to view. Then click 'Start Playback'



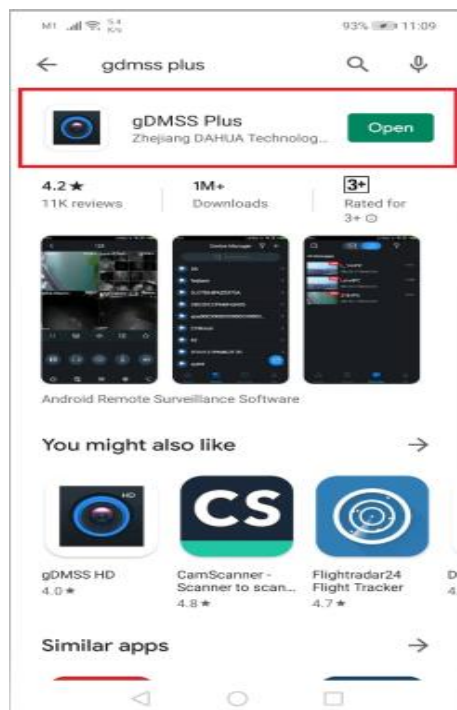
- 4) Click One Camera View and Use the icons at the bottom of screen to control the playback.



## iDMSS Plus / gDMSS Plus

### Downloading the App

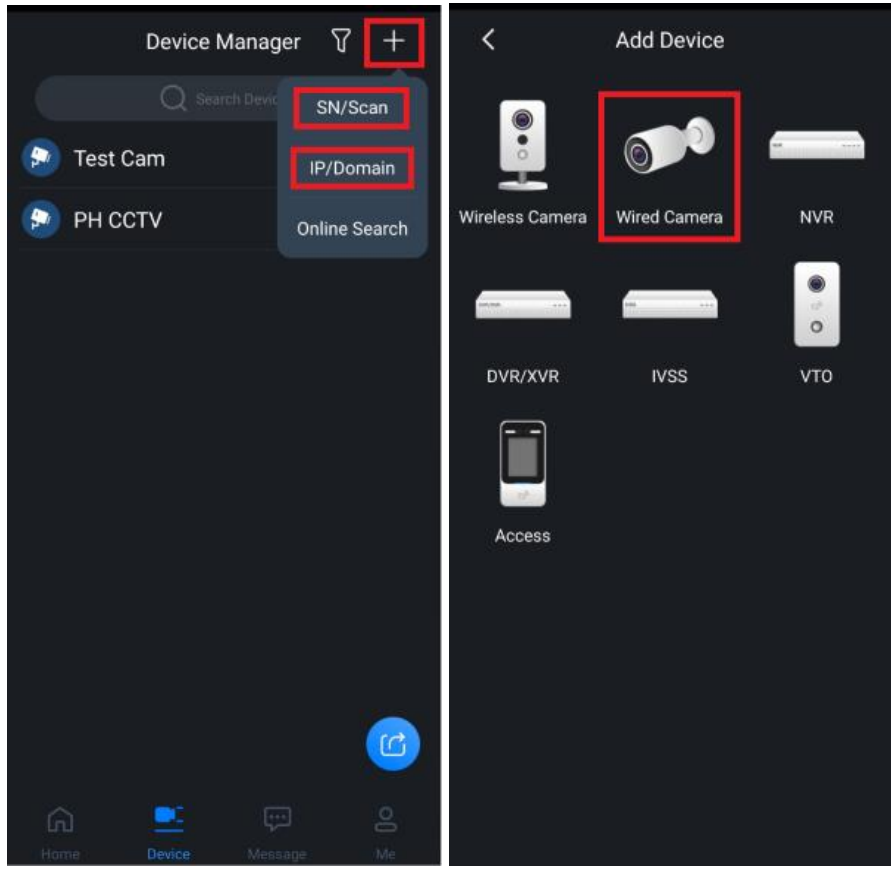
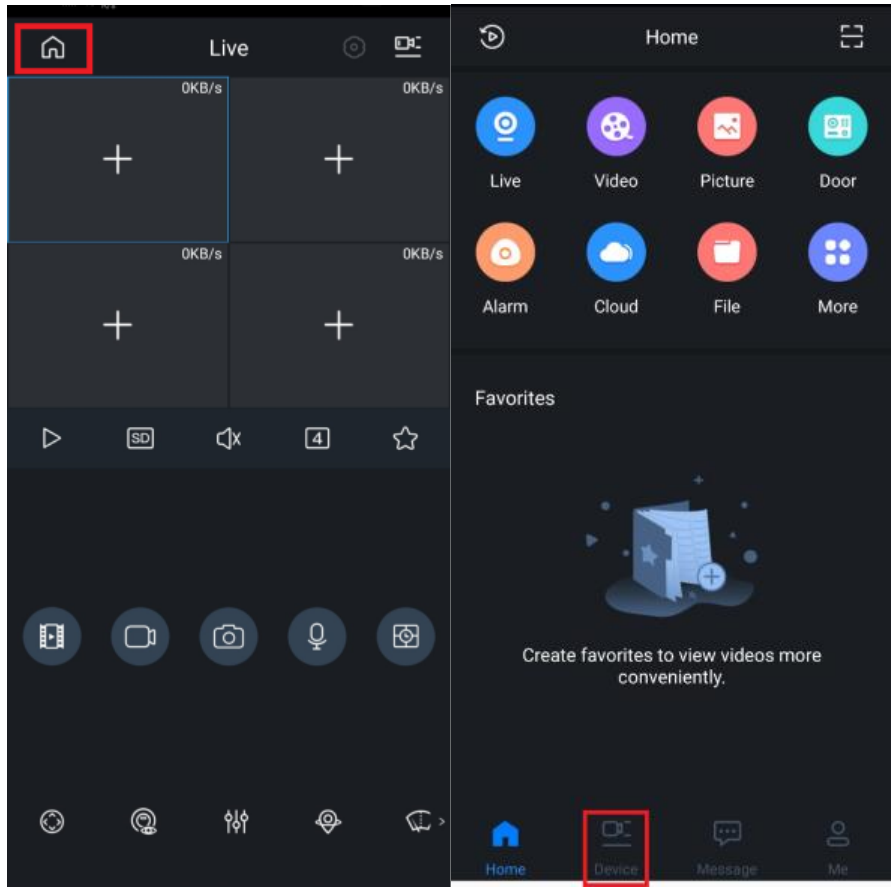
- 1) Download the remote viewing app from the App Store. Simply search 'iDMSS Plus' for Apple and 'gDMSS Plus' for Android.



### Mobile Configuration

- 3) Open the app and navigate to the Device Manager by selecting the menu item in the top left of screen. From the Main Menu select Device below of the screen. Select + Button, select SN if you have the serial number of the device or select IP/Domain if you have the IP address or the Domain Name of the device. Then Select the Wired Camera to enter the details.





- 4) Enter the details, your valid username and password and select Start Live Preview.

Address: type the IP address or the Domain Name

Port: 37777 is the default

Name: Create a profile Name (e.g. Home CCTV)

Username: Type the Username set in the CCTV recorder.

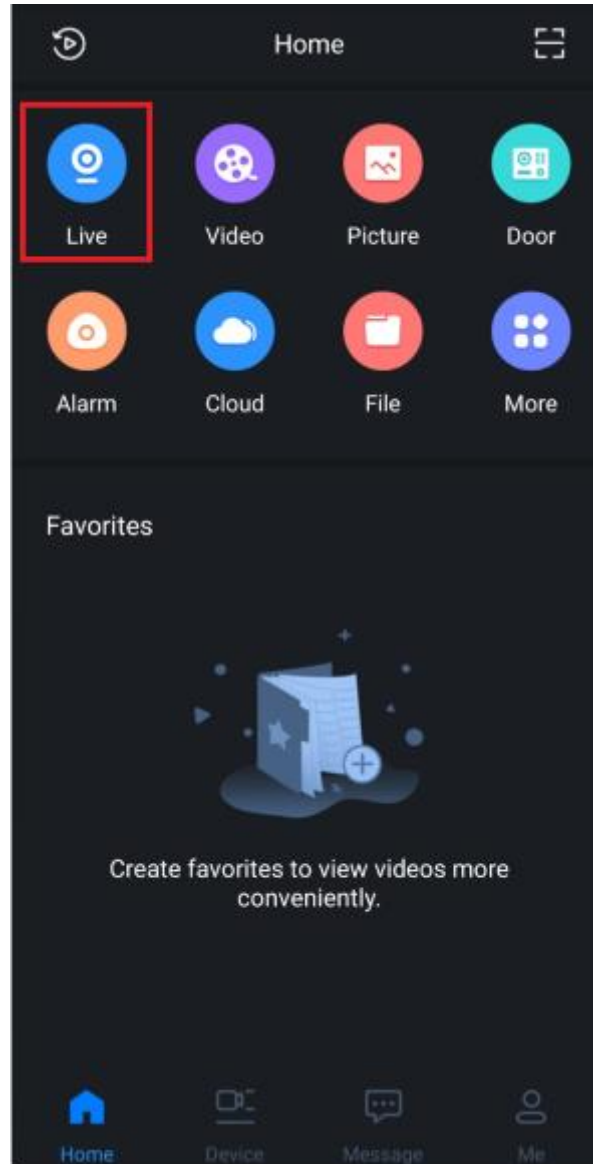
Device Password: Type the Password set in the CCTV recorder.

Then Press **Save Icon**.

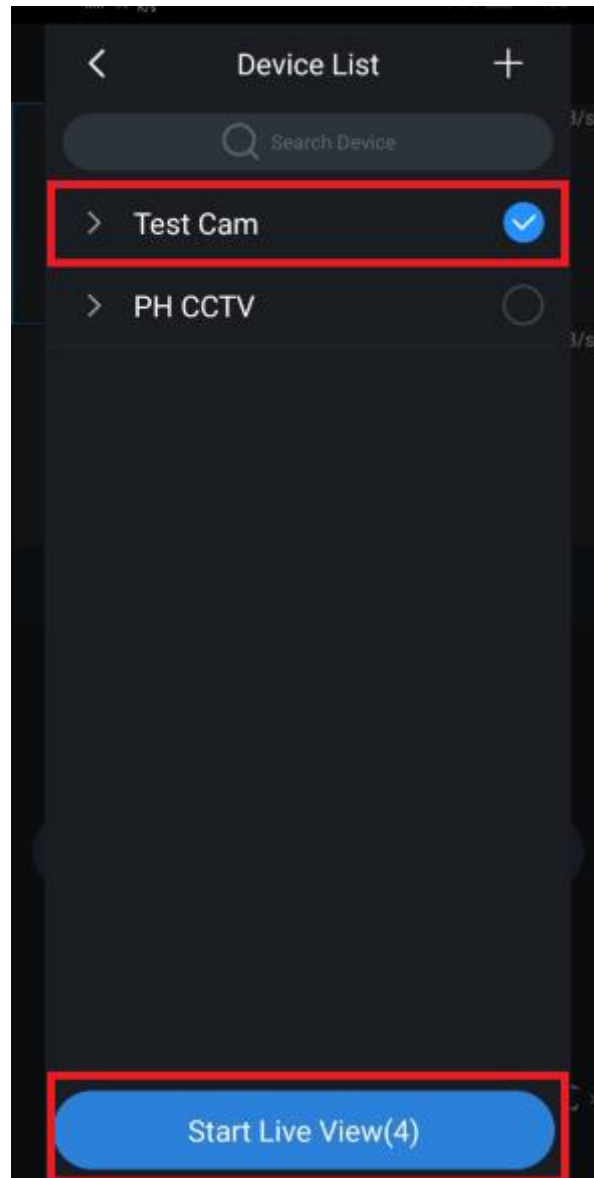
The screenshot shows a mobile application interface for adding a device. The title bar is dark with a back arrow on the left, the text 'Add Device' in the center, and a save icon (a document with a checkmark) on the right, which is highlighted with a red box. Below the title bar, there are two fields: 'Add Mode' and 'IP/Domain >'. The main form area is a dark rectangle with a red border, containing five rows of input fields: 'Address', 'Port' (with the value '37777'), 'Device Name', 'Username' (with the value 'admin'), and 'Device Password' (with a toggle icon). The save icon in the top right corner is also highlighted with a red box.

## Starting Live View

4) When launching the application select 'Live' from the menu in the top left of screen.

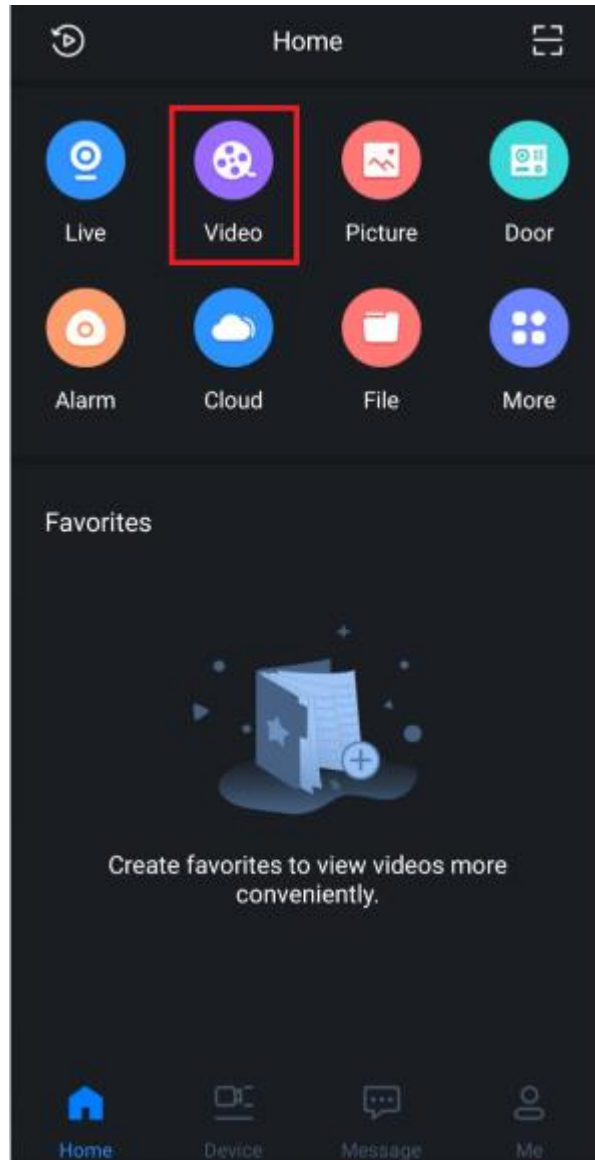


- 5) Select the profile you want to view by selecting the tick box on the right-hand side of the device. Once it is selected press “Start Live View” at the bottom and you will be taken to the live camera footage for the selected device.

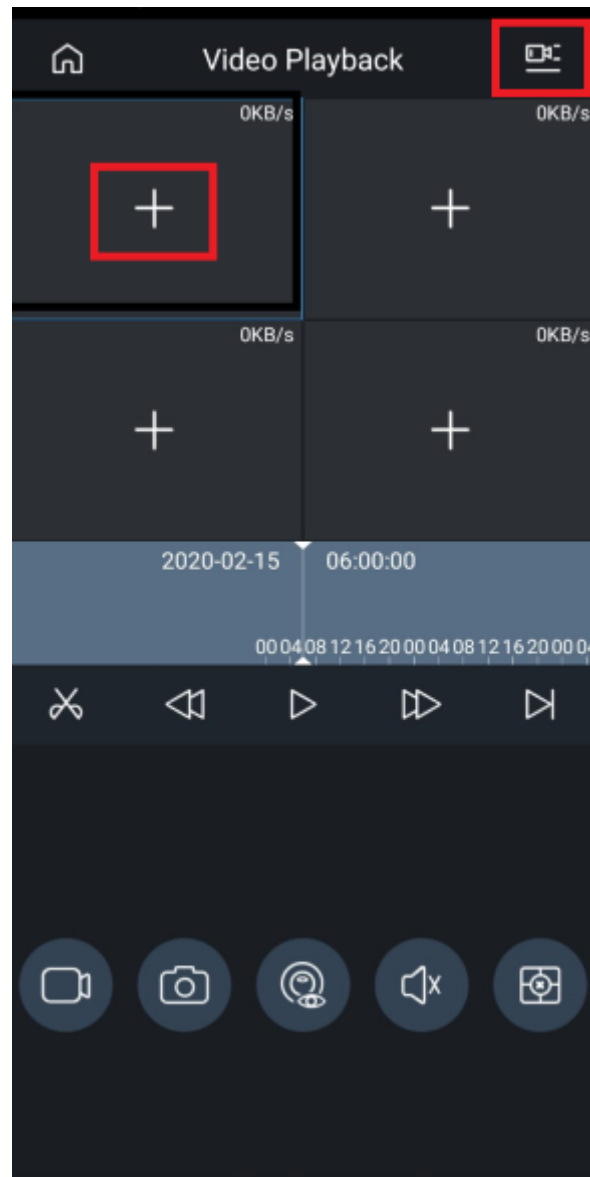


## Starting Playback

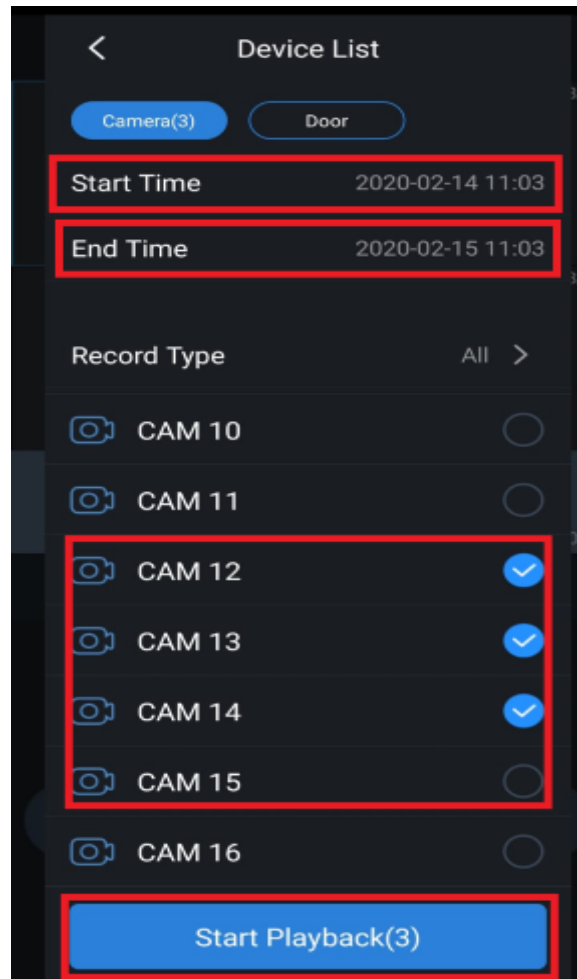
- 5) When launching the application select 'Video' from the menu icon in the top left of screen.



- 6) Select the add icon to import up to four cameras or you can select the camera icon in top right of the screen for multiple cameras to view



7) Select the appropriate date and time you wish to search and the camera you wish to add. Maximum of 4 cameras only to view. Then click 'Start Playback'



8) Click One Camera View and Use the icons at the bottom of screen to control the playback.

